

trueServer - Biometric Security Module

Biometric Security Module For Card Issuance and Authentication Systems

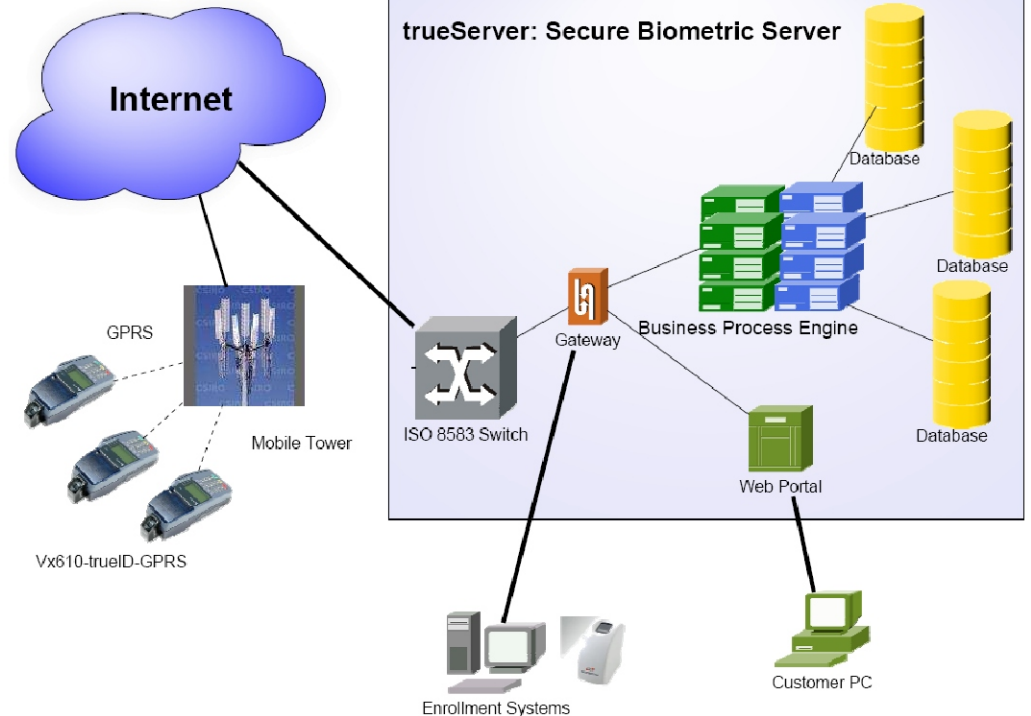
innoviti
simplifying communications

trueServer is a Biometric Security Module that can be used for enrollment and storage of cardholder fingerprints during card issuance and subsequent usage for transaction authorization.

trueServer is a state-of-the-art Biometric Security Module (BSM), similar to a Host Security Module used for PIN based card issuance and authentication systems. It provides the ability to enroll a cardholder fingerprints, store them in an encrypted manner in the BSM and then provide access to these fingerprints for carrying out online authentication during a transaction.

The BSM is designed as a multi-port system that can handle up to 40 parallel requests for enrollment and authentication at a time. The system has two types of application interfaces, an ISO 8583 interface for connection to a typical financial switch and host and a web based interface for configuration of the system and for reporting. The ISO interface can be used for integrating the BSM into the switch for enrollment and authentication transactions.

Fingerprint storage on the BSM is done using 128/256 (optional) AES encryption. Every attempt to access the BSM is logged with reports available for successful and unsuccessful authentication



attempts including information of the originating device, cardholder details and timestamps of transactions. The system can be configured for 4 to 10 fingerprint storage against a cardholder and authentication logic can be built as a single or combination of fingerprints.

The BSM can be used for card issuance with the storage of the fingerprints being done locally on a smart card and as a backup on the BSM or for online secure storage in the BSM wherein it is used during authentication also. In the latter case the cardholder can be provided with a magnetic stripe card for cardholder identity with online fingerprint matching being used for authentication.

The BSM is available as a software module that can be installed on any server class machine for providing the above functionality.

Innoviti's POS terminals such as the Vx610-trueID, Vx510-trueID and PC based systems such as PC-trueID can be used seamlessly with the BSM for enrollment and authentication with minimal programming necessary.

trueServer - Biometric Security Module

Biometric Security Module For Card Issuance and Authentication Systems

BENEFITS AT A GLANCE

- Secure storage of fingerprints using 128/256 bit AES.
- ISO 19794-2, ANSI 378 and proprietary templates support.
- ISO 8583 and web based interfaces for application development.
- Reporting interface for viewing logs of all attempts at accessing BSM.
- Option to configure number of fingerprints used for authentication and combination logic for fingerprints.
- Seamless interface to Vx610-truelD, Vx510-truelD and PC-truelD

PRODUCT SPECIFICATIONS

Parameter	Specification
BSM operating system	Linux
BSM Hardware requirements	2.5 Ghz + dual-core system with 4 GB RAM, 250 GB hard-disk
Interfaces	ISO 8583, Web interface
Templates supported	ISO 19794-2, ANSI 378
Storage security	128/ 256 bit AES
Terminals supported	Any supporting above templates. Recommended Vx510-truelD, Vx610-truelD, PC-truelD
Verification time	<1s

Innoviti Embedded Solutions Pvt. Ltd.,

"NGR the Edge", No.41,
2nd & 3rd Floor, 3rd Main, 5th Cross,
Saibaba Mandir Road,
Cambridge Layout, Halasuru,
Bangalore 560008
Tel: 91 80 40701403 Fax: 91 80 40701450
URL: <http://www.innoviti.com>